

Village Church in Wellesley

Congregational † United Church of Christ

9:00 AM Worship ~ Eastertide

LOVE is ALIVE

He is Risen!

April 21, 2024, Chapel & Livestream

What a blessing it is to have you here today!



Please use this QR code to register your presence on our new online church attendance check-in web page.

Hearing Assistance Available



Induction loop systems are available in the Chapel and in the Narthex section of the Sanctuary. Hearing devices may be turned to the “T” setting. Those without devices may request a loop receiver and earphones.



ORDER OF WORSHIP

*Please rise in body or in spirit.

PRELUDE “Shepherd Me, O God” Marty Haugen
Ginny Bailey, piano

WELCOME & PRAYER OF INVOCATION
Martha Schick



*GATHERING SONG

NO. 247

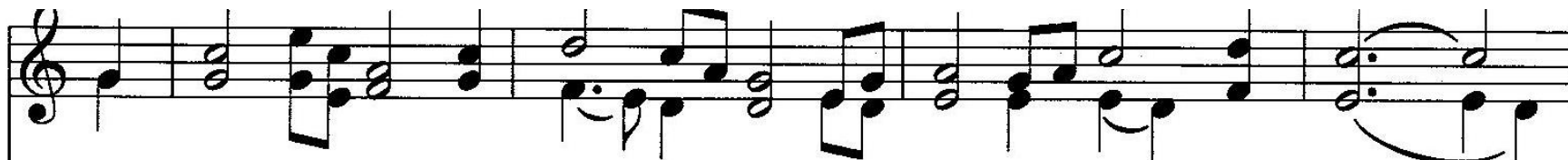
“My Shepherd Is
the Living God”



1 My shep-herd is the liv - ing God, I there-fore noth-ing need;
2 When I walk through the shades of death, your pres-ence is my stay;
3 The sure pro - vi - sions of my God at - tend me all my days;



In pas - tures fair, near pleas - ant streams you set - tle me to feed.
A word of your sup - port - ing breath drives all my fears a - way.
O may your house be my a - bode, and all my work be praise.



You bring my wan-dering spir - it back when I for-sake your ways,
Your hand, in sight of all my foes, does still my ta - ble spread;
There would I find a set - tled rest, while oth - ers come and go—



And lead me for your mer - cy's sake in paths of truth and grace.
My cup with bless-ings o - ver-flows, your oil a - noints my head.
No more a strang-er or a guest, but like a child at home.

PRAYER OF CONFESSION & ASSURANCE OF PARDON

1 of 2

Stacy Swain

(Please join in reading the bold sections)

Holy One,

The Psalmist joyfully declares:

"Know that the Lord is God.

It is God who made us, we belong to God.

We are God's people, the sheep of God's pasture."

Great Shepherd,

**We long to know that you are with us, looking out for us, and loving us,
no matter how far we stray or how tempted we are by greener pastures.**

We confess we long to feel the joyful and complete sense of belonging that the Psalmist feels.

A belonging that makes us feel valued, secure, and whole, just as we are.

A belonging we can freely share with others.

Continued...

(Please join in reading the bold sections)

Jesus taught us about a flock that is ever-expanding, never complete.

Like Jesus, at our best we reach out with compassion, find human connections, and offer grace.

Still, we confess, we are prone to judge, condemn, or be suspicious of those we don't know. We even criticize, belittle, and berate those whom we love.

(silence)

Great shepherd of our souls,
forgive us our sin, tend to our needs, and make us secure in your embrace.

Then help us extend that embrace to others.

In Jesus name, **Amen**

***SHARING THE PEACE OF CHRIST**

The peace of Christ be with you,

and also with you.

*Please stand as you are able
and share a greeting of peace
with one another.*



SUNG RESPONSE

“Halleluja”



A musical staff in treble clef with a key signature of three sharps (F#, C#, G#) and a 4/4 time signature. The melody consists of eighth and quarter notes. Chord symbols are placed above the staff: A, E, A, D, Bm, and E.

Hal-le, hal-le, hal - le - lu - ja. Hal-le, hal-le, hal - le - lu - ja.



A musical staff in treble clef with a key signature of three sharps (F#, C#, G#) and a 4/4 time signature. The melody continues with eighth and quarter notes. Chord symbols are placed above the staff: A, C#7, F#m, Bm, E7sus4, E7, and A. The staff ends with a double bar line and repeat dots.

Hal-le, hal-le, hal - le - lu - ja. Hal-le - lu-ja, hal - le - lu - ja.

SCRIPTURE 1 John 10:11-18

HOMILY Martha Schick

MUSICAL RESPONSE

“The King of Love My Shepherd Is
(Instrumental)”



INVITATION TO PRAYER STATIONS & OFFERINGS

*baptismal remembrance

*candle lighting

*silent prayer in your seat

*prayer stones

*financial gifts may be offered in basket or by QR code



Preparation for Holy Communion

EVERYONE is invited to share in the Lord's supper.

Please collect bread and cup, return to your seat, and hold until we commune together.

Music "Shepherd of My Heart"

HOLY COMMUNION

Prayer of Thanksgiving at the Table

Jesus' Words of Invitation and the Gifts of his Life

Communion Prayer and Lord's Prayer

**Our Father, who art in heaven, hallowed be thy name,
Thy kingdom come, thy will be done, on earth as it is in heaven.
Give us this day our daily bread, and forgive us our trespasses,
As we forgive those who trespass against us.
Lead us not into temptation, but deliver us from evil.
For thine is the kingdom, the power, and the glory, forever. Amen.**

***DOXOLOGY**

Praise God from whom all blessings flow;

Praise God all creatures here below;

Alleluia! Alleluia!

Praise God for all that love has done;

Creator, Christ and Spirit One.

Alleluia! Alleluia! Alleluia!

COMMON LIFE & Moment for Ministry:

Pastoral Residency Committee

Susan Sullivan

Introduction of Residency Candidate

Carlos Aoun

***CLOSING
SONG**

“God the Spirit
Guide and Guardian”

p. 1 of 2



1 God the Spir - it, guide and guard - ian, wind - sped
2 Christ our Sav - ior, sov - ereign, shep - herd, Word made
3 Great Cre - a - tor, life - be - stow - er, truth be -
4 Tri - une God, mys - te - rious be - ing, un - di -




flame and hov - ering dove, Breath of life and voice of
flesh, love cru - ci - fied, Teach - er, heal - er, suf - fering
yond all thought's re - call, Fount of wis - dom, womb of
vid - ed and di - verse, Deep - er than our minds can



proph - ets, sign of bless - ing, power of love: Give to
ser - vant, friend of sin - ners, foe of pride: In your
mer - cy, giv - ing and for - giv - ing all: As you
fath - om, great - er than our creeds re - hearse: Help us


***CLOSING
SONG**

“God the Spirit
Guide and Guardian”



those who lead your peo - ple fresh a - noint - ing
tend - ing may all pas - tors* learn and live a
know our strength and weak - ness, so may those the
in our var - ied call - ings your full im - age

p. 2 of 2



of your grace; Send them forth as bold a -
shep - herd's care; Grant them cour - age and com -
church ex - alts O - ver - see its life stead -
to pro - claim, That our min - is - tries u -



pos - tles to your church in ev - ery place.
pas - sion shown through word and deed and prayer.
fast - ly yet not o - ver - look its faults.
nit - ing may give glo - ry to your name.

BENEDICTION

SENDING MUSIC “Such Perfect Love My Shepherd Shows”

Thank you for joining us today!



We invite you to scan this QR code to learn about upcoming **common life events** and opportunities, or **to give**.

Dismissal: Go in peace!

